

San Diego County Medical Examiner
Methamphetamine Related Deaths
in San Diego County

<i>Year</i>	<i>Total</i>
1995	150
1996	124
1997	156
1998	110
1999	108
2000	140
2001	150
2002	166
2003	210
2004	205
2005	245
2006	174
2007	184

(Methamphetamine related deaths = all deaths investigated by the County Medical Examiner in which Methamphetamine was detected in the body at the time of the death or fatal event including all accidents, homicides and suicides in San Diego County)

San Diego County Medical Examiner
Methamphetamine Related Deaths – Manner
2007

<i>Manner</i>	<i>Total</i>	<i>% of Meth. related deaths</i>			<i>% all deaths of this manner</i>		
		2007 (2004)	2006 (2003)	2005 (2002)	2007 (2004)	2006 (2003)	2005 (2002)
Accident (Drug related) 27 with other drugs, 13 contributing to fatal natural disease, 47 with meth alone +/- chronic disease	88	48% (50%)	45% (45%)	44% (44%)			
Accident (Motor Vehicle)	20	11% (12%)	14% (11%)	14% (17%)	6% (7%)	7% (7%)	10% (8%)
Accident (Other) (3 drowning, 2 fire, 1 fall from height, 1 industrial accident, 1 hyperthermia)	8	4% (6%)	5% (6%)	6% (5%)			
Natural with methamphetamine present	6	3% (3%)	4% (3%)	5% (7%)			
Homicide (Including 6 of 11 Law Enforcement shootings)	30	16% (15%)	15% (17%)	17% (13%)	22% (21%)	17% (22%)	33% (12%)
Suicide	29	16% (10%)	14% (16%)	11% (12%)	8% (6%)	8% (10%)	8.5% (6%)
Other or Undetermined	1	0.5% (3%)	2% (1%)	1% (1%)			
Perinatal/Fetal Death (ME jurisdiction is not generally assumed in these cases unless maternal or fetal trauma is suspected)	2	1% (1%)	0% (1%)	1% (1%)			
TOTAL	184 (174 in 2006)				6% 7.8%	6% 7.9%	9.4% 6.8%

San Diego County Medical Examiner
Deaths Due to Drug Intoxication
Drug Related Accidents
2007

<i>Accident – Drug Related</i>	<i>Total</i>
Overdose on Methamphetamine Alone without potentially fatal chronic disease present (one swallowed baggie of drugs)	11
Overdose on Another Drug(s) plus Methamphetamine* (Morphine/Heroin (11); Cocaine (5); Benzodiazepine (5); Psychiatric medication (3); Methadone (3); Alcohol (2); GHB (2); MDMA; Oxycodone; Codeine; Meperidine)	27
Contributing Chronic Natural Disease (36 with chronic cardiac disease which could account for the death even in the absence of methamphetamine)	36
Acutely Fatal Natural Disease with methamphetamine intoxication as a contributing factor (7 brain hemorrhage, 6 acute cardiovascular, 1 pneumonia)	14
<i>TOTAL</i>	88

*Other drugs listed with most frequently detected drugs first. Some cases included multiple drugs. Diazepam was the most common benzodiazepine detected.

San Diego County Medical Examiner
Methamphetamine Related Deaths – Age
2007

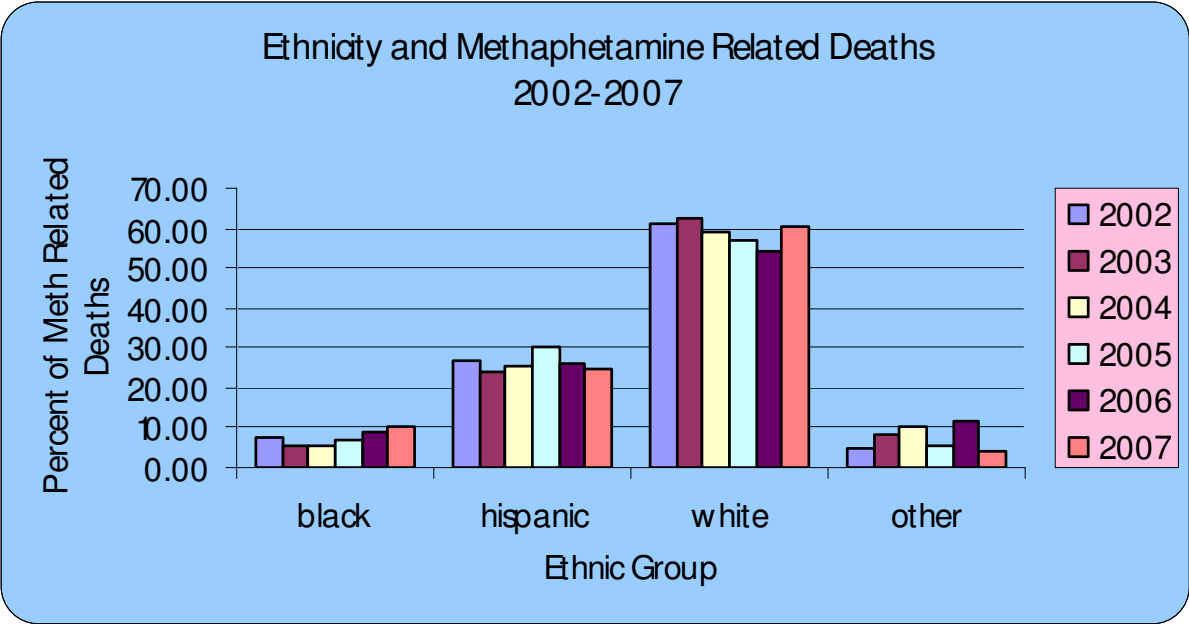
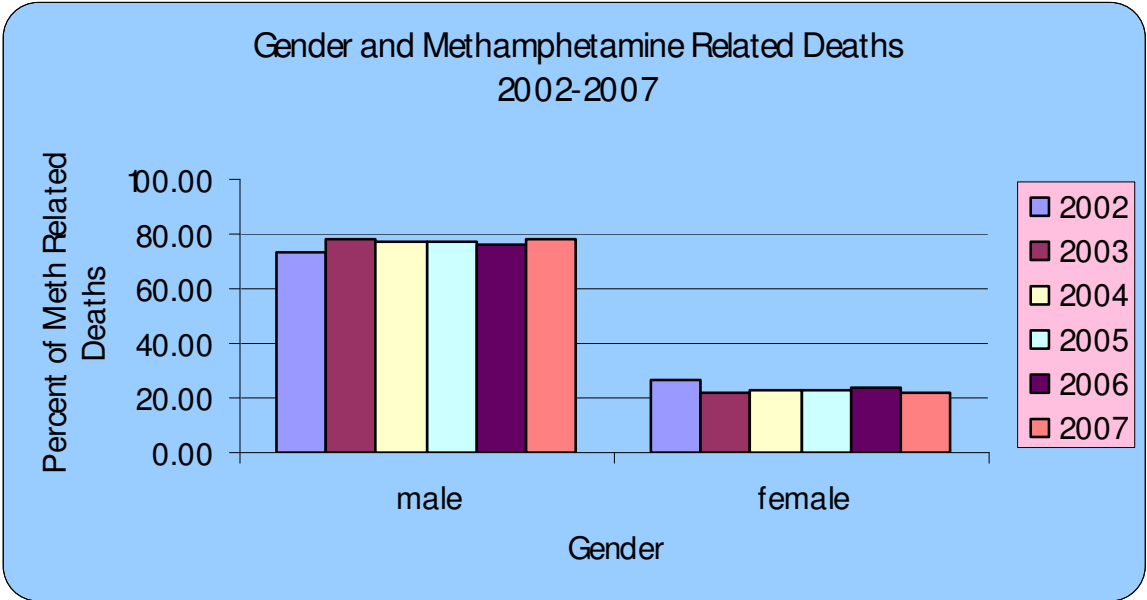
<i>Age</i>	<i># Of Deaths</i>	<i>% Of Total</i>	<i>% Of Total (2006)</i>	<i>% Of Total (2005)</i>	<i>% Of Total (2004)</i>	<i>% Of Total (2003)</i>	<i>% Of Total (2002)</i>
< 1 Year	2	1%	0.5%	2%	2%	<1%	<1%
1-19 Years	2	1%	4%	4%	4%	4%	4%
20-29 Years	33	18%	17%	7%	18%	22%	22%
30-39 Years	32	17%	18%	21%	25%	24%	28%
40-49 Years	56	30%	35%	32%	30%	30%	32%
50-59 Years	49	27%	20%	15%	20%	16%	13%
60 + Years (oldest 68)	9	5%	3%	5%	1%	2%	1%
Unknown	1	0.5%	2%	-	-	-	-
<i>TOTAL</i>	<i>184</i>	-		-	-	-	-

San Diego County Medical Examiner
Methamphetamine Related Deaths – *Manner vs. Age*
2007

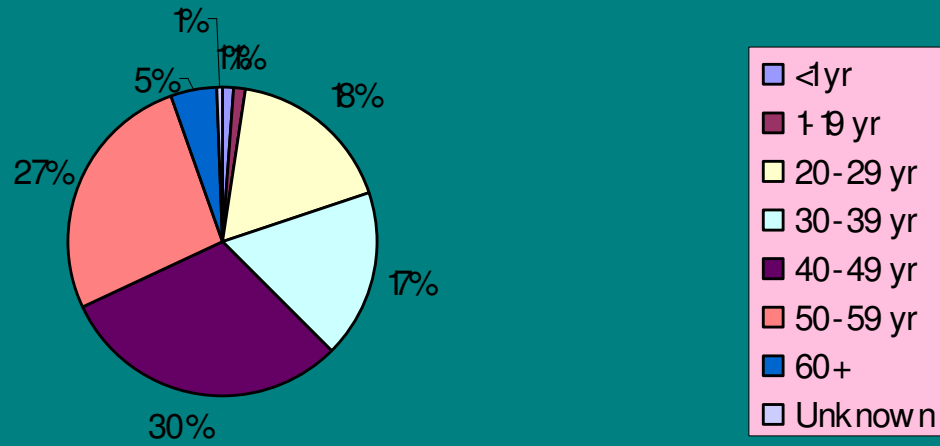
<i>Manner</i>	<i><1 Year</i>	<i>1-19 Years</i>	<i>20-29 Years</i>	<i>30-39 Years</i>	<i>40-49 Years</i>	<i>50-59 Years</i>	<i>60 + Years</i>	Unknown	TOTAL
Accidental (Drug Related)	-	-	6	12	34	30	5	1	88
Accidental (Motor Vehicle)	-	-	7	3	3	5	2	-	20
Accidental (Other)	-	-	-	3	1	3	1	-	8
Natural with methamphetamine present	-	-	-	1	3	2	-	-	6
Homicide	-	1	14	7	4	3	1	-	30
Suicide	-	-	6	6	11	6	-	-	29
Other/Undetermined	1	1	-	-	-	-	-	-	2
Fetal/Perinatal Death	1	-	-	-	-	-	-	-	1
<i>TOTAL</i>	2	2	33	32	56	49	9	1	184

San Diego County Medical Examiner: Ethnicity & Gender 2007

<i>Ethnicity</i>	<i># Of Deaths</i>	<i>Male</i>	<i>Female</i>	<i>% of Total Meth. Deaths</i>
American Indian	3	2	1	2%
Black	19	14	5	10%
Filipino	2	0	2	1%
Hispanic	46	40	6	25%
Samoan	1	1	0	0.5%
Vietnamese	1	1	0	0.5%
White	111	85	26	60%
Other	1	1	0	0.5%
<i>TOTAL</i>	<i>184</i>	<i>144</i>	<i>40</i>	<i>-</i>



Age in Methamphetamine Related Deaths 2007



Occupation

Trade	Customer service	Other	Unemployed	Unknown
Acoustic Worker 1 Auto Restorer 1 Building Framer 1 Business Owner 2 Carpenter 3 Composite Maker 1 Concrete Construction 1 Construction 14 Contractor 1 Crane Operator 1 Draftsman 1 Electrician 1 Farmer 1 Foreman 1 General contractor – Owner 1 Handyman 2 Horse Trainer 1 Laborer 4 Landscape 1 Machinist 2 Manager 2 Mechanic 3 Office Contractor 1 Painter 1 Pipe Fitter 1 Plumber 2 Press Operator 1 Roofer 1 Sand Blaster 1 Stocker 1 Tattoo Artist 1 Tile Setter 2 Tree Trimmer 1 Truck Driver 3 Upholsterer 1 Warehouse Manager 1 Warehouse Worker 1	Auto Sales 1 Barber 1 Business Office Clerk 1 Bus Boy 1 Bus Operator 1 Care Salesman 2 Clerical/Clerk 2 Computer Specialist/Tech 2 Cook 1 Counselor 1 Country Club Manager 1 Custodian 1 Customer Service 2 Delivery Person 1 Food Preparer 1 Grocery Store Clerk 1 Hairstylist 1 Home Care Provider 1 Landlord 1 Medical Doctor 1 Nurses Aid 1 Pawn Shop Clerk 1 Sales 5 Telecommunications 1 Shuttle Driver 1 Shipping/Receiving Clerk 1 Section Leader 1 Receptionist 1 Postal Service 2 Physical Therapist 1 Waitress 1	Bio-Chemist 1 Civil Service 1 Disabled 2 Disc Jockey 1 Firefighter 1 Homemaker 2 Infant 2 Musician 1 Pianist 1 Student 4 Seaman 1 Retired USMC 1	None 4 Unemployed 1 Never Worked 1	Undetermined 7 Unknown 14 Blank 34